



# **Personal Learning Device (PLD) Briefing for Sec 1 Parents**

**January 2026**

**Sharing by St Andrew's School (Secondary)**



# Today's Briefing

- National Digital Literacy Programme
- Blended Learning at SAS(S)
- Device Information
- Funding Support for Students
- Supporting Students in the Safe and Effective Use of the Devices
- Timeline





# The National Digital Literacy Programme (NDLP)

1. The NDLP was launched in March 2020 to help students **strengthen their digital literacy and acquire digital skills** needed to navigate an increasingly digitalised world.

2. Under the NDLP, every secondary school student will **own a school-prescribed Personal Learning Device (PLD)**. Students may use funds from their Edusave Account to pay for the PLD.

In an increasingly digitalised world, it is essential to equip students to thrive in a digital society and take on the jobs of the future.







# Intended Outcomes of the PDLP

The use of the personal learning device for teaching and learning aims to:



**Support the development of digital literacies**



**Support self-directed and collaborative learning**



**Enhance Teaching and Learning**



# Intended Outcomes for Saints



01

## HOLISTIC THINKER

- Conduct Research
- Learn using different ICT Tools
- Consider various points of view

02

## EFFECTIVE COMMUNICATOR

- Collaborate with peers
- Present ideas confidently

03

## COMMUNITY BUILDER

- Create digital products
- Connect with stakeholders



# How will your child use the Personal Learning Device?

## **At St Andrew's School (Secondary), your child will be using the PLD for...**

1. Supporting greater personalisation and differentiation in learning
2. Empowering students to engage in self-directed learning anytime and anywhere
3. Enhancing the development of 21CC and digital literacies.
4. Empowering teachers with deeper data-driven insights into student learning.
5. Supporting pervasive use of the Student Learning Space (SLS) platform in school and allowing students to have seamless access to online learning in and out of class.



By Term 4, 2021,  
secondary schools  
and JC/MI will have  
implemented Blended  
Learning at all levels.

## Tech Goodness It's Friday (TGIF)

- TGIF will be a regular feature of the Saints schooling experience
- Odd Week Fridays for all levels.





# Supporting Students in the Safe and Effective Use of the Devices







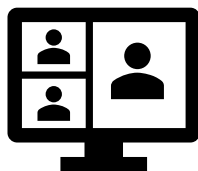
# Cyber Wellness Concerns Identified by Local Studies/Surveys



**Harmful Online  
Content**



**Gaming and  
associated risks**



**Cyberbullying**



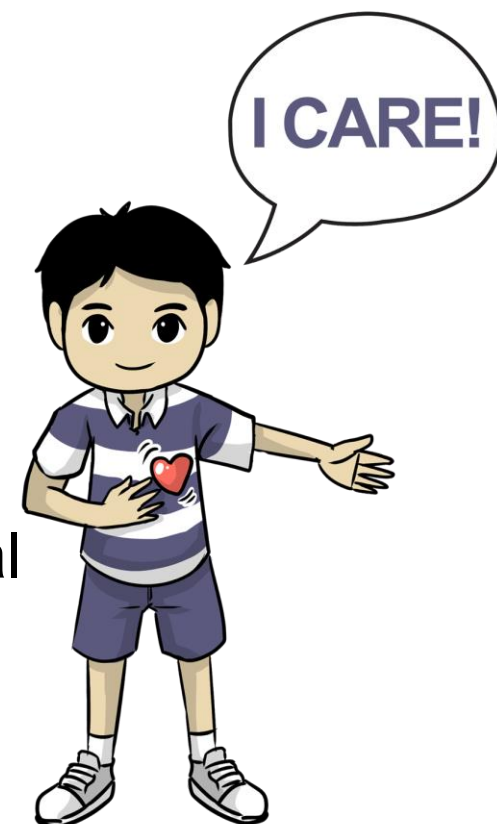
**Excessive social  
media use**



# Supporting Students in the Safe and Effective Use of the Devices

The school has measures in place to enable a safer digital environment for learning with the use of PLDs, e.g.

- School rules on digital device use
- Classroom management and routines
- Cyber Wellness Education in CCE
- Partnering parents/guardians to support students in their use of technology for learning
- Device Management Application (DMA) to support a safer digital environment for learning





# Routines

## **Before students report to school,**

- Ensure that the device is fully charged at home

## **When students report to school,**

- Ensure that the device is kept in the bag when reporting to class
- Mobile phones to be kept in the locker

## **When students move from one class to another,**

- Carry the device with them to the next venue
- Place the device in the locker when not in use
- Activate the device only when the subject teacher requires the need for it



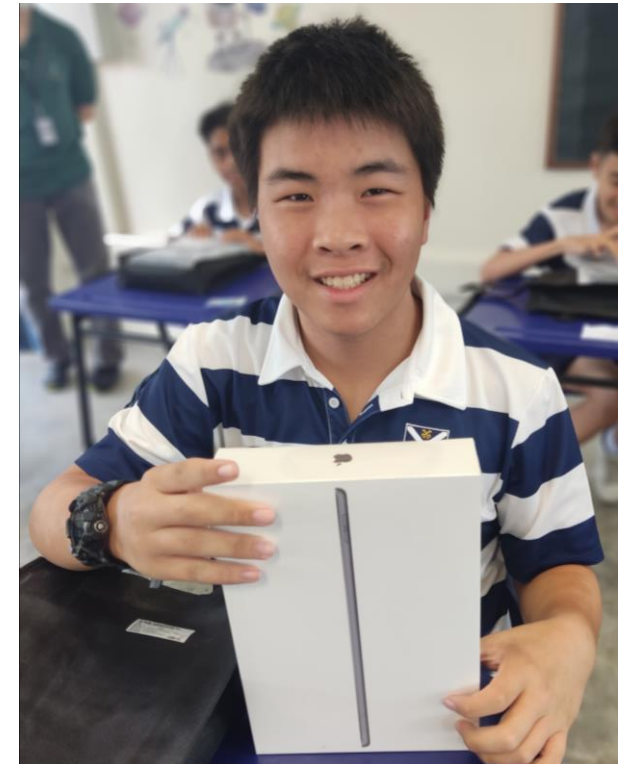
# Cyber Wellness Education

## Educating students on Cyber Wellness

MOE has made significant changes to the Character and Citizenship Education (CCE) curriculum. Cyber Wellness lessons will feature significantly in these lessons.

The broad topics covered in Cyber Wellness are:

- Cyber Use
- Cyber Identity
- Cyber Relationships
- Cyber Citizenship
- Cyber Ethics







# Cyber Wellness Education in CCE

Throughout their Secondary School education, students will learn about:

- Balanced use and self control
- Cyber bullying and Upstanding
- How to be a positive influence online
- How to handle online falsehoods
- How to manage social media (peer influence, emotions, echo chambers)
- Online relationship and Online safety (grooming, self disclosure)
- To respect intellectual property rights



# Cyber Wellness Education @ SAS(S)

The school also has strategies to enable school-wide implementation of CCE. These include:

## **Assembly Talks:**

- Crime Prevention Talk on Cyber offences and consequences
- Presentation on using social media responsibly
- Hall assembly programmes on overcoming cyber bullying and responsible use of the internet.



# Cyber Wellness Education @ SAS(S)

The school also has strategies to enable school-wide implementation of CCE. These include:

## **Peer Support:**

- Promoting a Peer Support Culture through Cyber Wellness Ambassadors & Peer Support Leaders

## **CCE Lessons & Programmes :**

- Lesson Package on TGIF routines
- Cyber Wellness Package and Poster Competition
- Cyber Wellness week in Term 3 to promote positive cyber habits



# Parents' / Guardians' Role

We would like to partner parents/guardians to ensure that students are well supported in their use of technology for learning.

As parents/guardians, you can help in the following ways:

- Model good digital habits for your child/ward  
e.g. parents/guardians not using devices during family meals
- Know your child/ward well and have conversations with your child/ward about safe and responsible use of technology.
- Set ground rules for internet/device usage.
- Guide your child/ward to use productivity tools using his PLD, to organise information and simplify tasks for efficiency.





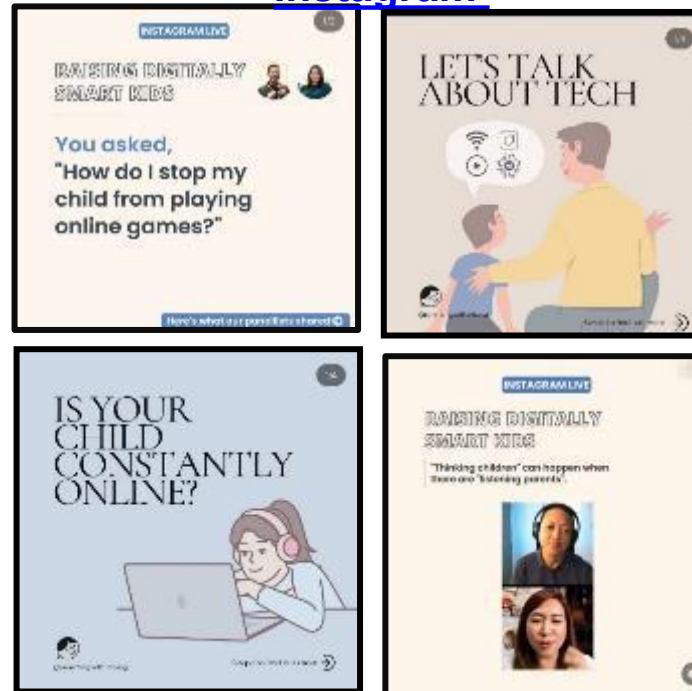
# Supporting Resources for Parents

Parents/guardians play a crucial role in guiding your child/ward to use devices responsibly and safely. DMA complements your efforts in supporting your child/ward as they navigate the digital space. Here are some resources that you can refer to:

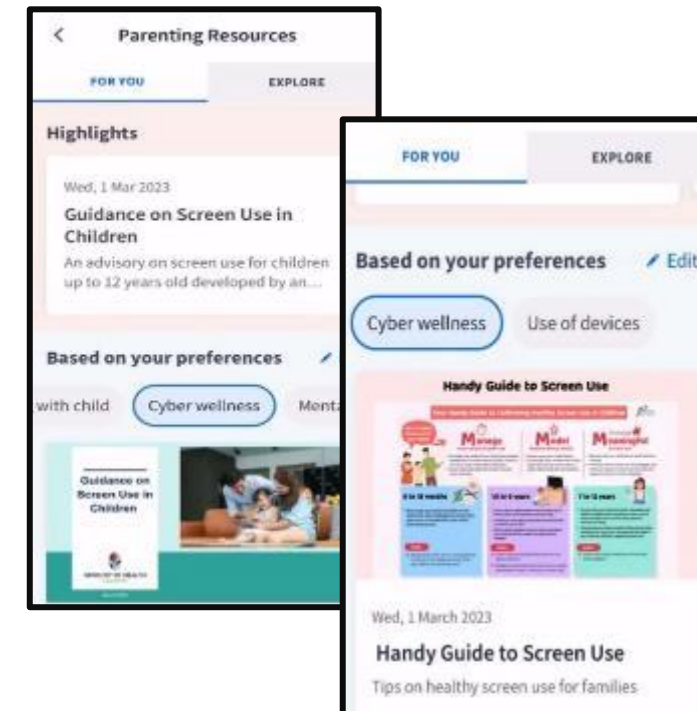
## A. Parent Kit



## B. Bite-size tips and advice via Parentingwith.MOEsg Instagram



## C. Resources from MOE and other agencies (available on resources repository in Parents Gateway)

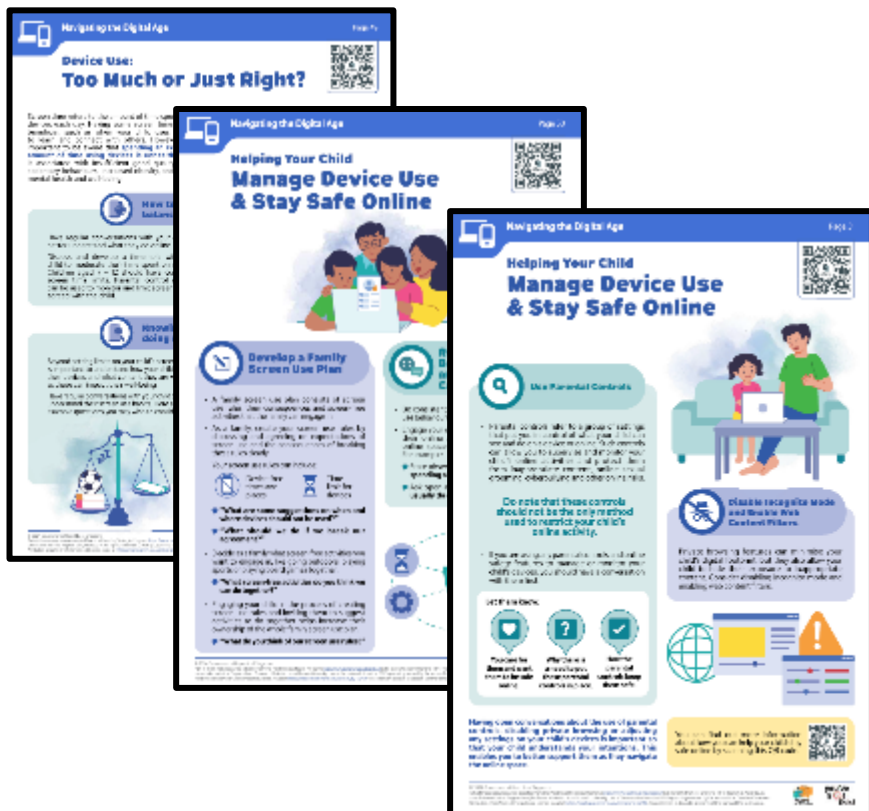




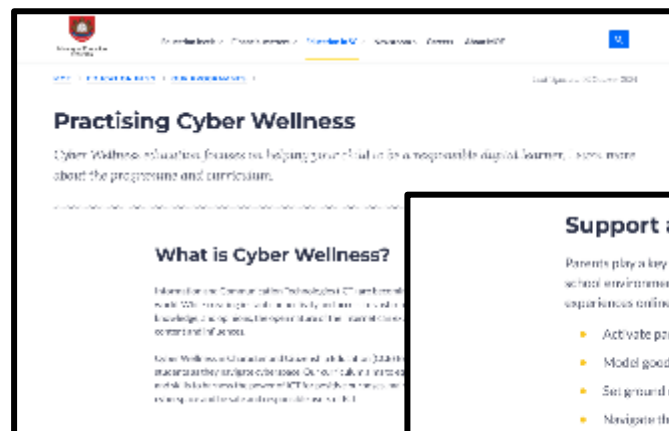
# Supporting Resources for Parents

## D. Parenting for Wellness Toolbox for Parents

The following extracted quick tips and strategies have been shared to you via Parents Gateway. Click on the pink header to download the full suite of resources of the Toolbox.



## E. More resources are available via MOE Cyber Wellness Webpage



### Support at home

Parents play a key role in their children's growth. Students benefit the most when the home and school environments are aligned to each other. To help your child stay safe and have positive experiences online, you can:

- Activate parental controls on your home devices.
- Model good digital habits for your child.
- Set ground rules for internet use.
- Navigate the internet together to understand their usage.

### Resources

Learn more about how to keep your child safe online through these resources

#### From MOE

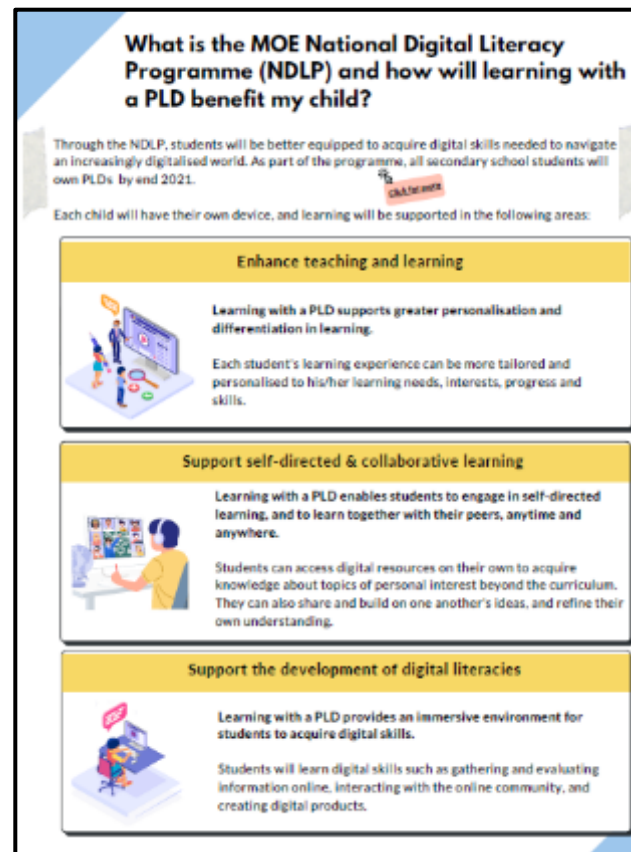
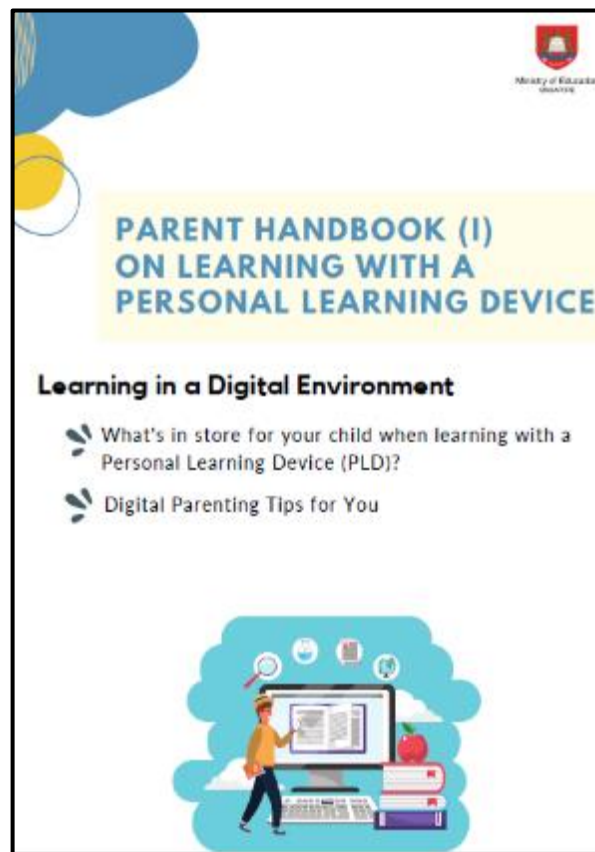
- [Children and their devices: How to strike the right balance](#)
- [Future tense: Keeping kids grounded while tech turns the world upside down](#)
- [What does a student's AI-enhanced day look like? Here's a peek](#)
- [Are you struggling with your child's excessive device use?](#)
- [7 things every parent can do to keep kids cyber-safe: A tech dads' special](#)
- [The future looks messy: why this dad isn't afraid of the rise of AI](#)
- [Keeping kids safe online – A community effort](#)
- [Parent Kit – Raising A Digitally Smart Child](#)
- [Parent Kit – Experiencing Blended Learning with Our Children](#)
- [Recording of Instagram Live – Raising Digitally Smart Kids](#)



# Supporting Resources for Parents

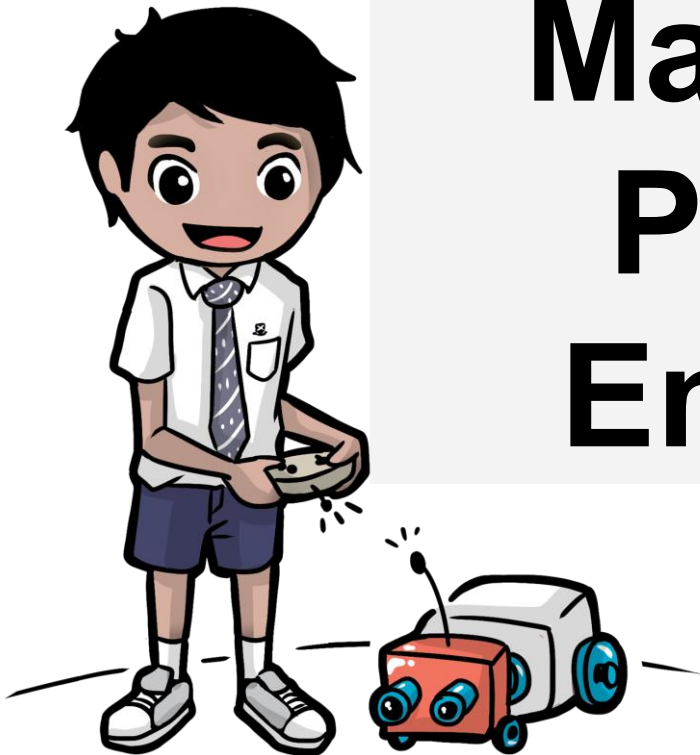
## F. Parent Handbooks (I) and (II) on Learning with a Personal Learning Device

These Handbooks provide tips on supporting your child in the use of PLDs for learning and are shared via the PG notification together with the letter to purchase PLDs.





# **Role of the Device Management App (DMA) in Providing a Safer Digital Environment for Learning**







# Device Management Application Installation

The MOE DMA solution for iPad, Jamf, is an app that will be installed on all students' PLDs to support their safe and responsible use of devices. The DMA will be funded by MOE.

The installation of the MOE DMA applies to both devices purchased through the school and any student-owned devices that parents/guardians opt for the student to use instead of the school-prescribed PLD.

The MOE DMA will be installed after the collection of the device. Students will be guided on the installation.

The MOE DMA will be uninstalled from the device when students graduate or leave the school.



# In-School DMA Settings (Default)

Schools will determine DMA settings for **in-school use**. As a default, these settings will continue to be in place after school as well:

- MOE and the school will set the level of web content filtering, including filtering out objectionable content or content that may not be conducive to teaching and learning (e.g. social media, pornography, gambling, or websites containing extremist content)
- From 630am to 6pm, the default setting will be under the school mode
- The school will determine the apps and programs to be installed to support teaching and learning (The school will determine the applications and programs to be installed to support teaching and learning. )

Schools have the flexibility to customise the following:

- start of school hours, provided they are **no earlier than 6:30am**;
- end of school hours / start of after-school hours (no restriction);
- End of after-school hours / start of device sleep hours, provided it is **no later than 10:30pm**.



# Providing Parents/ Guardians with Greater Choice for After –School PLD Use

The following tables outline the different levels of restrictions, controls, and monitoring for each After-School DMA Parent Option.

Default	Option A	Option B
<b>In-school DMA settings will continue after school hours</b>	<b>DMA settings can be modified by Parents/Guardians after school hours</b>	<b>DMA will be inactive* after school hours</b>
For parents/guardians who want their child’s/ward’s use of the device to be restricted only to teaching and learning, and prefer to leave it to the school to decide on DMA settings after school hours.	For parents/guardians who prefer to take charge of the level of restrictions for their child’s/ward’s use of the device after school hours regulated by the DMA.	For parents/guardians who do not want their child’s/ward’s use of the device after school hours to be regulated by the DMA at all.

- \*No data will be collected after school hours when the DMA is inactive.
- Having default school settings continue after school hours is the best option for parents/guardians who prefer not to, or do not feel ready to manage their child’s/ward’s device use on their own.
- Parents/guardians can request to change their choice of DMA settings, which is the existing practice.



# Providing Parents/ Guardians with Greater Choice for After –School PLD Use

	<b>Default Setting</b> (This will apply if no Alternative Options are chosen)	<b>Alternative Setting: Option A</b> (DMA settings can be modified)	<b>Alternative Setting: Option B</b> (DMA will be inactive only after school hours)
<b>Protect students from objectionable content</b>	Web content filtering will include, and not limited to, the following categories: <ul style="list-style-type: none"><li>• Violent/extremist content</li><li>• Sexual/pornographic content</li><li>• Gambling-related content</li><li>• Suicide/self-harm content</li><li>• Cyberbullying content</li><li>• Content endangering public health</li></ul>	Parents/Guardians will be able to include additional web content filtering using the Jamf Parent app. However, parents/guardians cannot allow access to web content that is filtered out under the Default Setting.	No content filtering after school hours.

\* Screen Time limits set by the school will override parents'/ guardians' settings during school hours.





# Providing Parents/ Guardians with Greater Choice for After –School PLD Use

	Default Setting (This will apply if no Alternative Options are chosen)	Alternative Setting: Option A (DMA settings can be modified from the Default settings in place)	Alternative Setting: Option B (DMA will be inactive only after school hours)
<b>Reduce distractions from learning through control of applications</b>	Parents/Guardians will <u>not</u> be able to install additional applications.	<p>Parents/Guardians will be able to install additional applications after school hours by signing in to the Apple App Store using their personal Apple Accounts.</p> <p>Applications installed by parents/guardians/students will not be accessible during school hours.</p> <p>Parents/Guardians can limit after school access to applications that they install on the PLD.</p>	<p>Parents/Guardians/Students will be able to install additional applications after school hours by signing in to the Apple App Store using their personal Apple Accounts.</p> <p>Applications installed by parents/guardians/students will not be accessible during school hours.</p>



# Providing Parents/ Guardians with Greater Choice for After –School PLD Use

	<b>Default Setting</b> (This will apply if no Alternative Options are chosen)	<b>Alternative Setting: Option A</b> (DMA settings can be modified from the Default settings in place)	<b>Alternative Setting: Option B</b> (DMA will be inactive only after school hours)
<b>Limit screen time</b>	The school will define the specific hours during which the student can use the PLD.	Parents/Guardians can modify the amount of screen time for their child/ward by setting the PLD sleep hours to any time between 6pm and 10:30pm. This can be done on the Jamf Parent Application. <sup>2</sup>  Parents/Guardians can determine the duration of use of specified applications.	No limitation on duration of screen time. after school hours.  Sleep hours are not enforced. <sup>3</sup>

<sup>2</sup> During school hours, the screen time limits set by the school will override parents/guardians' settings.

<sup>3</sup> It is not recommended to install other parental controls (e.g. Apple's Family Sharing/Screen Time) as this could result in conflicting settings between school and parent controls. It may result in unexpected issues where some controls such as screen time restrictions may not work as intended.

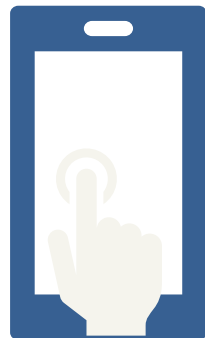


# Providing Parents/ Guardians with Greater Choice for After –School PLD Use

	<b>Default Setting</b> (This will apply if no Alternative Options are chosen)	<b>Alternative Setting: Option A</b> (DMA settings can be modified from the Default settings in place)	<b>Alternative Setting: Option B</b> (DMA will be inactive only after school hours)
<b>Monitor students' cyber activities</b>	Parents/Guardians will not be able to track their child's/ward's web browsing history due to Apple's Privacy Policy.		
<b>Provision of Jamf Parent account</b>	<b>X</b>	<b>✓</b>	<b>X</b>



# Deciding on the Choice of After-School DMA Option



## A. Child's/ward's current device usage habits

- How much time does my child/ward spend on their device?
- How well is my child/ward able to regulate their device usage on their own?
- Does my child/ward get easily distracted while doing online learning?



## B. Parents'/Guardians' involvement

- How confident and familiar am I with managing my child's/ward's cyber wellness?
- Are there existing routines and open conversations on the use of the Internet at home?
- Am I aware of how to prevent different types of cyber threats that my child/ward might face?





# Data Security

All user data collected through the MOE DMA will be stored in secure servers managed by appointed DMA Vendors with stringent access controls and audit trails implemented.

Data such as device information, email address of students and parents, device information will be deleted when the student graduates or leaves school. Website URLs accessed by students will be deleted at the end of each term.

The MOE DMA solutions used are cloud-based Software-as-a-Service (SaaS) solutions and are trusted solutions that have been operating for many years. They have also been subject to regular security reviews and assessments by independent reviewers.



# Data Security

MOE DMA solutions have sufficient security robustness to ensure that the data collected is properly stored and protected. MOE will also subject the DMA Vendors to regular security system audits based on tender requirements.

To prevent unauthorised access, DMA Administrators and DMA Vendors will be required to access their accounts using 2-factor authentication or the equivalent to ensure proper accountability for information access and other activities performed. There will be regular account reviews and audits for DMA Administrators' and DMA Vendors' accounts.



# Data Collected by the DMA

1. The MOE DMA does **NOT** collect any of the following data:

- Login IDs and passwords entered into websites or into any applications
- Actions performed (e.g., posts, online comments, items added to a shopping cart, etc.) when visiting websites and using apps
- Documents and photos stored in the PLDs
- PLD location (that means we cannot track any misplaced iPads)
- Webcam videos and microphone recordings

2. Parents may update their personal data (e.g., email addresses, names) by contacting the school, in accordance with the Personal Data and Protection Act (PDPA).



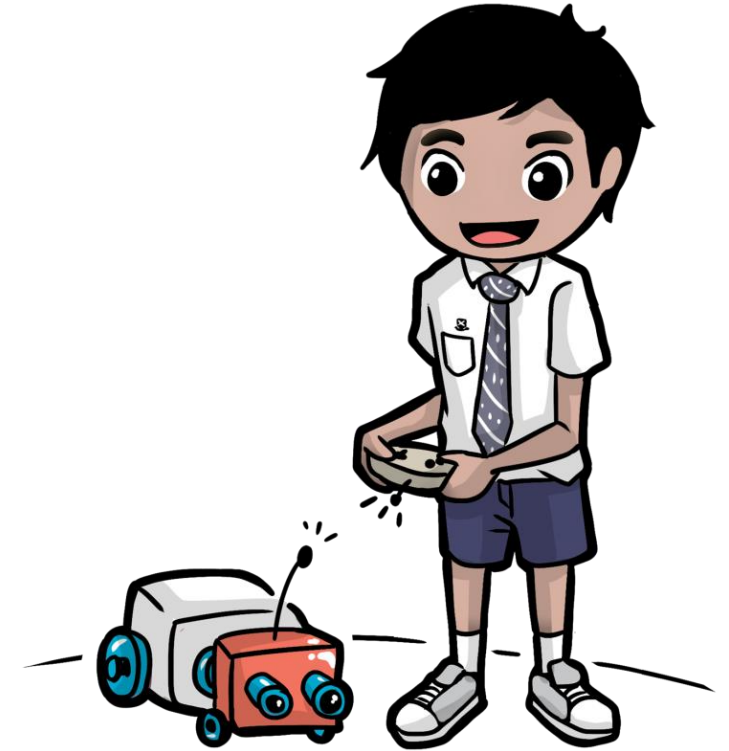
# Device Information





# Objectives of Device Selection in SAS(S)

- Mobility & Weight
- Processing Speed
- Operating System
- Productivity
- Affordances to Teaching & Learning





# Device and Funding Information



## **iPad 11-inch (A16)**

6 GB RAM

128 GB storage

Wi-Fi, USB C

4 years warranty (AppleCare+)

4 years insurance

Apple pencil (USB-C)

Logitech Rugged Combo 4 Keyboard  
case

**\$829.30**  
**(incl. GST)**

\* The price is a close estimation and there may be slight variation.



# Enhanced Package - 4 year Warranty and Insurance

**The student PLD will come with the Enhanced Device Bundle which includes\*:**

- 4-year warranty and 4-year insurance
- 2 repairs or 1 replacement claim (under the insurance scheme)

**\*The price of the PLD Bundle may appear to be higher than similar models on the retail markets as the price of those devices usually does not include extended warranty and insurance coverage.**



# Enhanced Package - 4-year AppleCare+ & Logitech Keyboard

## Hardware Coverage:

AppleCare+ for Schools provides a 4-year coverage for iPad, Apple Pencil and includes the following:

- iPad hardware excluding the repair for cracked screen.
- Battery that retains less than 80% of its original capacity
- Apple Pencil
- Inclusive of USB cable and power adapter
- Logitech Combo 4 keyboard (Casing)





# Enhanced Package - 4 years insurance (by Vendor)

**Insurance Coverage:** 2 repairs or 1 Replacement (in case of theft)

Covers all types of accidental damages such as:

- Fire
- Lightning
- Power Surges
- Accidental eg. Water spillage, drop etc
- Theft due to forcible entry (claim must be supported with police report from any neighbourhood police post)
- Robbery
- Accidental loss will not be covered by insurance.

Note: Insurance for replacement does not include accessories (Apple Pencil & keyboard).



# Enhanced Package - 3 years insurance (by Vendor)

**\*Accidental loss will not be covered by insurance**

**\*Insurance will cease if any claim has reached its requirements. However, the AppleCare+ will continue for 4 years from the day our students receive their device. Do note that terms and conditions still apply.**



# Technical Support for Students' Device

Technical Support will be provided to students through:

- Service Desk (Comp Lab, A502) in school during breaktime and after school
  - ❖ Troubleshooting of device issues
  - ❖ Solve connectivity and software issues
- AsiaPac service centre:
  - ❖ Repair of devices (hardware issues)
    - a) AsiaPac Technology Pte. Ltd.  
Blk 219, Henderson Road, #05-01,  
Henderson Industrial Park Singapore 159556
    - b) Helpdesk Number: 6270 8281
    - c) Helpdesk Email: [pdlpapple@asiapac.com.sg](mailto:pdlpapple@asiapac.com.sg)
      - i) Parents will bring the device to the vendor's service centre for any repair.
      - ii) Parents will have to bring the box/label issued to verify their purchase.

# Funding Support for Students







# Funding Support for Singapore Citizen (SC)

**The cost of the device bundle can be paid using your child's/ward's Edusave account,** after setting aside provision for payment of miscellaneous fees.

To ensure the affordability of devices, MOE has provided Edusave top-ups from 2020 to 2023 to all eligible Singaporean students in primary and secondary schools. In 2025, MOE has provided a \$500 Edusave top-up for students aged 13-16 years old.

These top-ups are on top of the annual \$290 credited into the Edusave account for Secondary School students and \$230 for Primary School students.



# Funding Support for Singapore Citizen (SC)

## Example

IPad (bundle + Warranty + Insurance)	\$829.30
Edusave balance	\$730
<b>Cash Outlay</b>	<b>\$99.30</b>



# Funding Support for Singapore Citizen (SC)

- For SC students who are on MOE Financial Assistance Scheme or whose family's monthly income meets the following criteria:

Gross Household Income (GHI)  $\leq$  \$4,000, or

Per Capita Income (PCI)  $\leq$  \$1,000

MOE will subsidise 50% of device bundle cost or \$350, whichever is lower.

- The remaining amount will be payable from the students' Edusave account. If there is insufficient balance in the students' Edusave account for the remaining amount, MOE will provide additional subsidy so that the cash out-of-pocket (OOP) is \$0.



# Funding Support for Singapore Citizen (SC)

## Funding scenario

Student A (SC on MOE FAS) GHI ≤ \$4,000 or PCI ≤ \$1,000	
Device Bundle Cost	<b>\$829.30</b>
Student Subsidy (50% or \$350, whichever is lower)	<b>\$350.00 (rounded up to nearest 10 cents)</b>
Available Edusave Balance (After setting aside for misc fees)	\$200.00 before deduction \$200.00 will be deducted
Additional Subsidy	<b>\$279.30</b>
Cash Out-of-pocket	\$0.00

For more details on financial assistance, please approach the school.  
Each student will subsequently receive a personalised bill





# Funding Support for Singapore Citizen (SC)

- For SC students whose family's monthly income is:

$\$4,000 < \text{Gross Household Income (GHI)} \leq \$5,500$ , or  
 $\$1,000 < \text{Per Capita Income (PCI)} \leq \$1,375$   
MOE will subsidise 30% of device bundle cost or \$200, whichever is lower.

- The remaining amount will be payable from the students' Edusave account. If there is insufficient balance in the students' Edusave account for the remaining amount, MOE will provide additional subsidy so that the cash out-of-pocket (OOP) is not more than \$50.



# Funding Support for Singapore Citizen (SC)

## Funding scenario

Student B (Non MOE-FAS SC from lower income family) \$4,000 < GHI ≤ \$5,500 or \$1,000 < PCI ≤ \$1,375	
Device Bundle Cost	<b>\$829.30</b>
Student Subsidy (30% or \$200, whichever is lower)	<b>\$200.00 (rounded up to nearest 10 cents)</b>
Available Edusave Balance (After setting aside for misc fees)	\$200.00 before deduction \$200.00 will be deducted
Additional Subsidy	<b>\$379.30</b>
Cash Out-of-pocket	\$50.00

For more details on financial assistance, please approach the school.  
Each student will subsequently receive a personalised bill

# Timeline





# Timeline

Time Frame	Activity
12 Jan 2026	<p>1. Submit:</p> <ul style="list-style-type: none"><li>a. consent to PLD purchase via in the PG notification which includes the following:<ul style="list-style-type: none"><li>• Intent to Purchase Personal Learning Device (PLD);</li><li>• Authorisation Form for the Collection of PLD</li></ul></li><li><b>b. For Singapore Citizen students only:</b> the Standing Order (SO) for the use of Edusave Account for PLD purchase via <a href="https://go.gov.sg/edusaveformsgso">https://go.gov.sg/edusaveformsgso</a></li></ul>
Term 2 2026	Collection of devices by students in school. (Recommended method)





# Collection of Devices

## Tentative date of collection: Term 2 2026

**It is recommended that your child/ward collects his device in school.**

If you would like to personally/have another adult to verify the condition of the device during collection with your child/ward:

- You may arrange to collect the device **at the vendor's service/collection centre\*** or appoint an adult proxy to do so.
- Your child/ward would need to bring the device to school and arrange for the school's IT department to install the DMA.

Please approach the school for further advice or clarification if you would like to make this arrangement.

\*Parents/Guardians (or adult proxy) will **not** be able to collect the PLD from the school.



# Important helplines

To access/find out more about...	Contact/Helpline
<b>This deck of slides</b>	<b><u><a href="https://standrewssec.moe.edu.sg">https://standrewssec.moe.edu.sg</a></u></b> <b>[Blended Learning/ NDLP]</b>
<b>Edusave Balance</b>	<b>6260 0777</b>
<b>Subsidy application for PDLP</b>	<b>Mdm. Halimah</b> <b>62851944</b> <b><u><a href="mailto:sass@moe.edu.sg">sass@moe.edu.sg</a></u></b>
<b>Device and DMA</b>	Mr. Gene Yeo at <u><a href="mailto:yeo_haig_gene@moe.edu.sg">yeo_haig_gene@moe.edu.sg</a></u> Mdm. Josephine Phua at <u><a href="mailto:phua_poi_yeok@moe.edu.sg">phua_poi_yeok@moe.edu.sg</a></u> Mr. Lee Yuh Hong at <u><a href="mailto:lee_yuh_hong@moe.edu.sg">lee_yuh_hong@moe.edu.sg</a></u>



# FAQs

## **1. I have an existing personal iPad. Can I use that instead and not buy from the school?**

Ans: Yes. But,

- (i) your child needs to bring the personal iPad to school so that the DMA can be installed on it.
- (ii) The iPad is preferably of Gen8 or later. Exclude iPad mini as this is too small.

## **2. Must I install the DMA?**

Ans: Yes. It allows us to ensure that the cyber safety of the child is protected, allows parents to control the usage, and it allows the ipad to interface with the school wifi etc to enable teaching and learning.

## **3. If I just want to buy the iPad without the pencil and case, can I?**

Ans: No, the purchase comes as a bundle.



## FAQs

### **4. Am I able to sync my iPhone to the iPad?**

Ans: No, as you log into your iphone using your personal Apple ID but log into the iPad using a school managed Apple ID.

### **5. My son already has a windows laptop / chromebook. Can he use that instead?**

Ans: No, as the school uses the Apple School Manager to install all the apps which also allows the iPad to auto log into the school wifi network. The teachers also use the Apple ecosystem for teaching and learning. He can still use it at home for his homework and SDL though.





# THANK YOU

